

16th June 2023

Dear Parents and Carers,



### Great Science Share

We are holding our Great Science Share next Wednesday afternoon (the 21<sup>st</sup> June) and we would love to invite parents to come between 3pm and 3:25pm to see what the children have been investigating.

All parents/carers are welcome please enter through the main doors and you will be directed to the school hall.

### Area SEND inspection: survey information for parents and carers

Ofsted and the Care Quality Commission (CQC) are visiting Oldham, as part of an inspection. They will be looking at arrangements for children and young people with special educational needs and/or disabilities (SEND).



They would like to hear your views about the support that your child receives, please see attachments to this newsletter for more information.



### Let's get reading - BOOM Reader

*"If you are going to get anywhere in life you have to read a lot of books." - Roald Dahl*

Well done to all the children and families who have logged onto Boom reader. We are pleased to announce the most home reading logs recorded on Boom reader this week.

Position	Name	Reads at home
First Place	Zara Yasin Class 5	9 parent home reads
Second place	Aleena Ahmed Class 2 Umar Ahmed Class 3 Bilal Malik Samokhvalova Class 6	6 parent home reads
Third Place	Maha Nazim Class 11	5 parent home reads



### Spelling Shed Winners

Place	Total points awarded for correct spellings	Child
1st	4,264,128	Devine Class 11
2nd	3,520,888	Saif Iqbal Class 10
3rd	2,497,280	Zakariyya Bin Jahid Class 6

### TT Rockstars - CELEBRATIONS!



The most accurate Class	Class 9
The most active class	Class 4 and 6
The most improved speed	Sara Khan Class 5
The most active player	Zorez Khan Cuevas Class 6

### Word Aware

This week's word is '**relics**'. Please encourage your child to use this word when out and about and complete the activities, which Miss Varley will share on Class Dojo.



### Attendance

Well done to classes 2, 8, 9 and 11 for achieving 96% attendance the last week of last half term.

## Area SEND inspection: survey information for parents and carers

Dear parent/carer

Ofsted and the Care Quality Commission (CQC) are visiting your area, as part of an inspection. We will be looking at arrangements for children and young people with special educational needs and/or disabilities (SEND).

We would like to hear your views about the support that your child receives. You can provide your views by completing an online survey at the following link:

<https://ofsted.smartsurvey.co.uk/p/AreaSend/10266970>

This survey is for parents/carers of children and young people with SEND aged 0-25.

Your views are important to us and will help inspectors understand your child's experience of the SEND arrangements within your area. The survey will close at 9am on **Tuesday 20 June 2023**.

The survey is voluntary, and you do not have to take part. The responses will complement the evidence collected by inspectors during the inspection. We do not ask for your name.

If you complete this survey, you consent to the transfer of your information from SmartSurvey to Ofsted.

For more information about how CQC and Ofsted collect and use data during inspections please see their individual privacy policies:

[CQC privacy statement](#); [Ofsted privacy policy](#)

Yours sincerely

Sue Eastwood  
**His Majesty's Inspector**

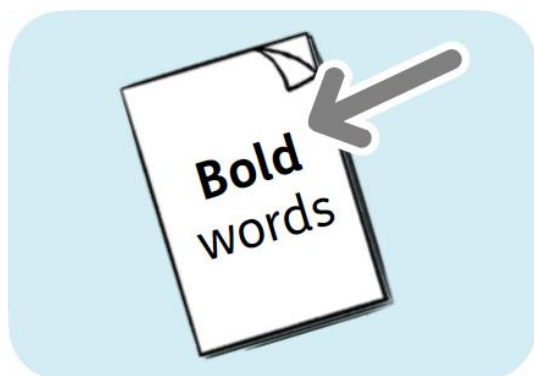
## Area SEND inspection

### Parent and carer views (Easy Read)



For parents and carers of children or young people aged up to 25 with special education needs and/or disabilities (SEND).

Please return your answers to [data.areasend@ofsted.gov.uk](mailto:data.areasend@ofsted.gov.uk) by **3pm on 19 June 2023**. Please add Oldham Metropolitan Borough Council to the title of your email.



In this Easy Read document, hard words are in **bold**. We explain what these words mean in the sentence after we have used them.

## Introduction



The Office for Standards in Education, Children's Services and Skills (Ofsted) checks the quality of education services in England, like schools and nurseries. We also look at children's social care.



The Care Quality Commission (CQC) checks the quality of health and social care services in England, like hospitals and care homes.



Together we are looking at what services are doing to make a difference and improve the lives of children and young people with SEND.



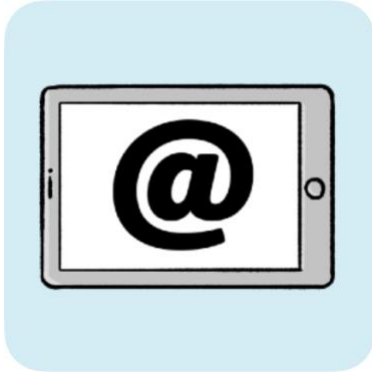
We want to make sure local services are meeting the needs of children and young people with SEND.



Please only answer these questions if you are the parent or carer of a child or young person aged 25 or under with SEND.



If you have more than 1 child with SEND, you can do a survey for each child.



If you have difficulties using this survey, please email:

[lasend.support@ofsted.gov.uk](mailto:lasend.support@ofsted.gov.uk)

You can ask someone to email for you.

## Safeguarding



**Safeguarding** is keeping people safe from harm and abuse.



If you think a child or young person is being harmed or abused, contact your local council.

We do not ask for your name, but we may try to find out who you are if you tell us something that makes us worried about you or another person. We will tell the local council and health services if you tell us something that makes us worried.



You can find out more about how to do this here:  
[www.gov.uk/report-child-abuse-to-local-council](http://www.gov.uk/report-child-abuse-to-local-council)



For young adults over the age of 18, call your local council and ask to speak to the adult safeguarding team. You can also look on the local council website.



You can also contact the NSPCC on  
0808 800 5000.



## Your information



We will treat the information you give us in confidence.

This survey is run by SmartSurvey. You can find out what they will do with your information here: [www.smartsurvey.co.uk/privacy-policy](http://www.smartsurvey.co.uk/privacy-policy)



SmartSurvey passes your information to Ofsted.

SmartSurvey and Ofsted will delete the information after 2 years.



**Question 1:** Does your child have SEND?  
If you answer 'no' to this question, the survey will close. (Please choose one)



Yes

Go to question 2



No

Stop the survey



I am not sure, but I think they probably do

Go to question 2



**Question 2:** Please click which of these your child has:



Autism spectrum disorder



An **impairment** to do with their hearing

An **impairment** is when part of the body doesn't work as it should



An impairment to do with more than 1 sense, like seeing and hearing



A moderate learning difficulty- this means they sometimes find it difficult to understand, learn and remember information



A physical disability- this is a disability to do with their body



Profound and multiple learning difficulties- this means their disability has a big effect on how they live. They might have difficulties seeing, hearing, speaking and moving



A severe learning difficulty- this means they find it difficult to understand, learn and remember information



Difficulties with their mental health, emotions and/or behaviour

See the next page for more answer choices.



A specific learning difficulty- this means they find a part of learning difficult



Speech, language and communication needs- this means they need support to talk to or understand others



An impairment to do with their sight



Other



**Question 3:** If you would like to, please tell us more about your child's special educational needs and/or disabilities.





**Question 4:** How old is your child?  
(Please choose one)



0 to 4 years old



5 to 10 years old



11 to 15 years old



16 to 19 years old



20 to 25 years old



**Question 5:** Is your child currently in education? (This could be pre-school, school, college or training) (Please choose one)



Yes

Go to question 6



No, they do not have a place at a school, college or training provider

Go to question 8



No, they have a place at school, college or training provider, but they do not go

Go to question 8



**Question 6:** Where does your child go to learn?



A pre-school, nursery, or childminder



A mainstream school- this is a school that most children go to



A private school - this is a school you have to pay to go to



A special school or college for children or young people with SEND



Alternative provision – this is for children and young people who can't attend mainstream school, for example, because they have been excluded or have needs which can't be met



University



At home



They are training for a job



Other – please say. Please do not write the name of the place or where it is





**Question 7:** Does your child go to a school, college or training in your local area?  
(Please choose one)

The picture can't be displayed. **Yes**

Go to question 9

The picture can't be displayed. **No**

Go to question 9

The picture can't be displayed. **Not sure**

Go to question 9



**Question 8:** If your child is not in school, college or training, please tell us more about why that is.



**Question 9: Does your child have an Education, Health and Care (EHC) plan?**

An **EHC plan** explains what needs your child has and what support they should get. (Please choose one)



Yes



No – we are trying to get one



No – we tried to get one but couldn't



No – we have not asked for one



Not sure



**Question 10:** Do you get clear information and advice to help you make decisions about your child's future?

(Please choose one)



Yes, always



Yes, most of the time



Sometimes



No



Not sure



**Question 11:** Do you know about the different services you can access to help support your child?

This could be from schools, health or care services.

(Please choose one)



Yes, I know which services I can get



I know about some services



No, I do not know which services I can get



Not sure



**Question 12:** Are your child's needs spotted and understood at the right time?

(Please choose one)



Yes, always



Yes, most of the time



Sometimes



No



Not sure



**Question 13:** If you would like to, please tell us more about whether your child's needs were spotted and understood at the right time.

## Learning and training



**Question 14:** Does your child get the right help and support for their learning and/or training? (Please choose one)



Yes, always

Go to question 15



Yes, most of the time

Go to question 15



Sometimes

Go to question 15



No

Go to question 15



They do not need support in their learning and/or training

Go to question 17



Not sure

Go to question 15



**Question 15:** What support in their learning and/or training could be better?

A large empty rectangular box for writing the answer to Question 15.



**Question 16:** What support in their learning and/or training is working well?

A large, empty rectangular box with a black border, intended for the user to provide their answer to the question.

## Healthcare services

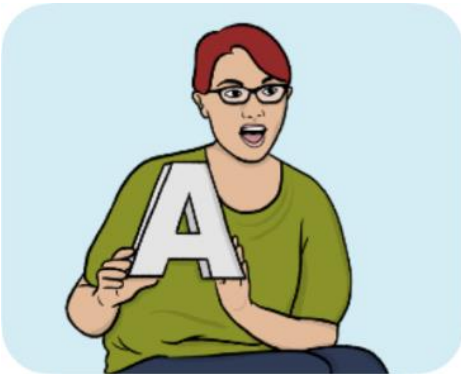


Healthcare services can include:

- doctors



- nurses



- help with speaking from health staff





- help with moving around from health staff



- help with mental health, emotions and/or behaviour



**Question 17:** Does your child get the right help and support from healthcare services?  
(Please choose one)



Yes - always

Go to question 18



Yes - most of the time

Go to question 18



Sometimes

Go to question 18



No

Go to question 18



They do not need support from health services

Go to question 20



Not sure

Go to question 18



**Question 18:** What support from health services could be better?

A large, empty rectangular box with a black border, intended for the user to provide their answer to the question.



**Question 19:** What support from health services is working well?

A large, empty rectangular box with a black border, intended for the user to provide their answer to the question.

## Social care services



**Social care** is the help people need with everyday things such as personal care or support for the family.



**Question 20:** Does your child get the right help and support from social care services? (Please choose one)



Yes - always

Go to question 21



Yes - most of the time

Go to question 21



Sometimes

Go to question 21



No

Go to question 21



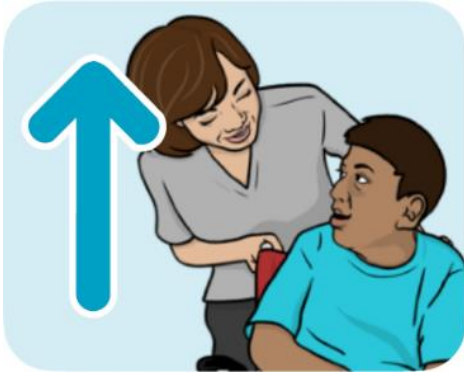
They do not need support from social care services

Go to question 23



Not sure

Go to question 21



**Question 21:** What support from social care services could be better?

A large, empty rectangular box with a thin black border, intended for the user to write their answer to the question.



**Question 22:** What support from social care services is working well?

A large, empty rectangular box with a black border, intended for the user to write their answer to the question.

## Spending time with others



**Question 23:** Does your child get the right help or support to:

- join in with clubs or activities?
- go on holiday?
- make friends?

(Please choose one)



Yes – always

Go to question 24



Yes – most of the time

Go to question 24



Sometimes

Go to question 24



No

Go to question 24



They do not need support in their social life

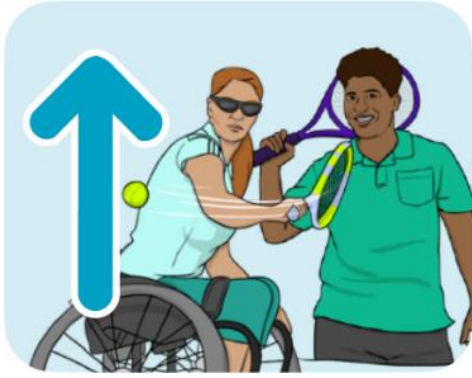
Go to question 26



Not sure

Go to question 24





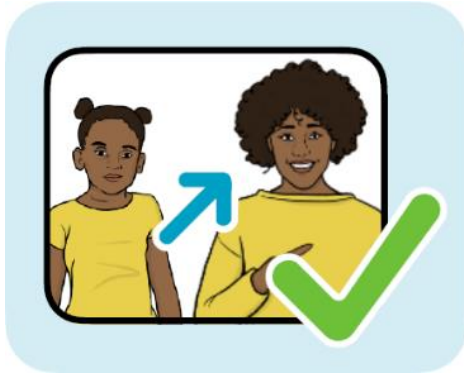
**Question 24:** What support to spend time with others could be better?



**Question 25:** What support to spend time with others is working well?

A large, empty rectangular box with a black border, intended for the user to write their answer to the question.

## Getting ready for the future



**Question 26:** Does your get the right help and support to get ready for the future?



This could be to go to college, get a job, or be able to do more for themselves.

(Please choose one)



Yes, always

Go to question 26



Yes, most of the time

Go to question 26



Sometimes

Go to question 26



No

Go to question 26



They do not need support

Go to question 28



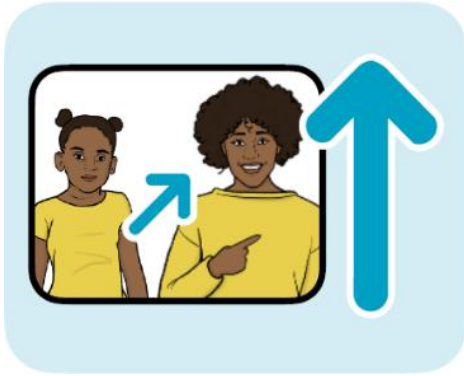
They are too young

Go to question 28



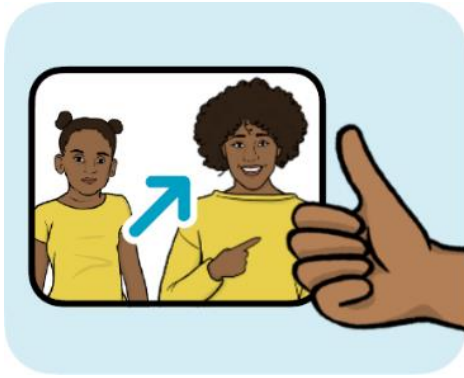
Not sure

Go to question 26



**Question 27:** What support to get them ready for the future could be better?

A large, empty rectangular box with a thin black border, intended for a handwritten response to the question.



**Question 28:** What support to get them ready for the future is working well?

A large, empty rectangular box with a thin black border, intended for writing an answer to the question above.

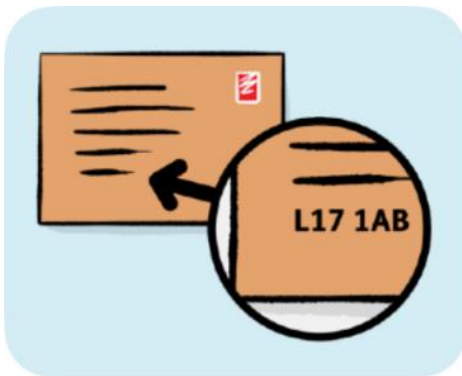
## Where do you live?



We would like to know where you live, to see if people in different places think differently.



You do not have to tell us if you do not want to.



**Question 29:** Please write your postcode if you would like to.

## For more information



You can find out more about what we do to check on local services here:

<https://www.gov.uk/government/publications/area-send-framework-and-handbook>